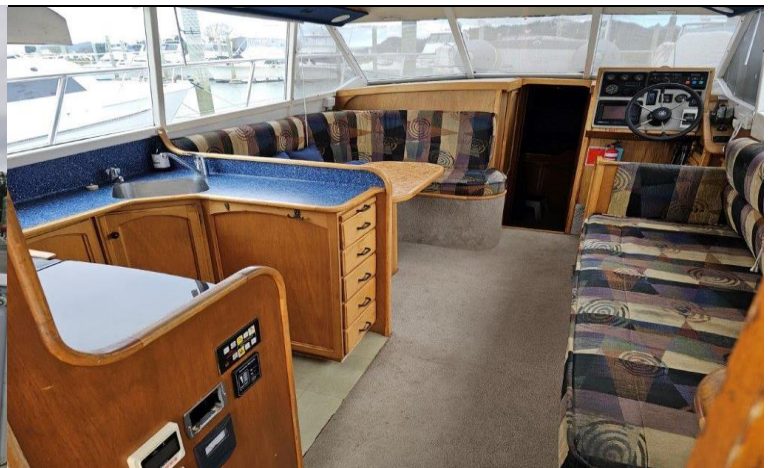


Vindex 38 (1996)

Jim Young design glass over double diagonal kauri weighing about 7 tonne, 3.9m beam, 12.7m (LOA), Powered by a single Volvo on a stern drive run about 4000 hours 230HP Kad42 12/14 knot cruise, 16/17 knot to speed, 750L fuel, 450L fresh water, Gas califont water heater, Teak cockpit, 12v cockpit freezer, Galley inc modern 4 burner gas hob/oven, Dometic fridge, Dinette to Port couch to Starboard, Double berth in Bow, Double berth in lock up cabin in Port ,Duel Helm stations, "Here is a large volume boat with lots to offer, due to vendors health it will be sold at this reduced price as is"

TL4478

\$68,000 ONO



Engines

Make: Volvo Sterndrive

Year: est. 1996

Hours: est. 4000

Cylinders: 6

Horsepower: 230HP

No of Engines: 1

Fuel Type: diesel

Fuel Capacity: est. 750L

Tank Material: S/S

Consumption: -

Prop type: -

Shaft or Leg: Stern drive

Thruster: -

Max Speed: est. 12 knots

Cruise Speed: est. 17 knots

Construction & Measurements

Hull Material: Glass over double diagonal Kauri

Deck/Cabin Material: -

Builder: Bruce McNally

Designer: Jim Young
Design

Date Launched: est. 1996



The New Zealand Home of Caribbean Boats

Tauranga Bridge Marina Office Ph: 07 575 0512

PO Box 15331, Hamilton 3244

Website: www.taurangaboatsales.co.nz

Emails: sales@taurangaboatsales.co.nz

admin@taurangaboatsales.co.nz

Length: 12.7m

Beam Width: 3.9m

Draft: 1m

Displacement: est. 7 tonne

Equipment

Gen Set: -

Anchor: Yes

Winch: Yes

Chain: Yes 80m

Warps: -

Covers etc: Yes Flybridge and Cockpit covers

Bilge Pump: Yes Electric

Start Batteries: -

Other Batteries: -

Steering: x2 stations

Davits: -

Board Ladder: -

Radar: -

Depth Sounder: Yes

Fish Finder: Yes

Compass: -

Capstan: Yes

Auto Pilot: Yes

VHF: Yes

SSB: -

GPS: Yes

Wind Inst: -

Liferaft: -

Dinghy: Yes soft bottom

Outboard: Yes 2HP

Lifejackets: Yes

EPIRB: Yes

Fire Ext: Yes x 2

Gas Detector: -

Windlass: Yes

Charger: -

Inverter: -

Shore Power: Yes

Solar/Wind: -

Other Equipment: Teak Cockpit, twin bait tank in swim platform

Interior:

Headroom: -

Airconditioning: -

Water Maker: -

Berth & Cabin Details: 2 cabins, double berth in bow + double in lockup cabin in Port

Stove/Oven: 4 burner gas hob & oven

Fridge: Dommitic in Galley

Freezer: 12v in cockpit

Shower: Yes

Toilet: Yes

Water Pressure: Yes

Hot Water: Yes Cali Font

Holding Tank: Not Plumbed
Or fitted

Water Capacity: 450Ltrs

Tank Material: S/S

Other:



The New Zealand Home of Caribbean Boats

Tauranga Bridge Marina Office Ph: 07 575 0512

PO Box 15331, Hamilton 3244

Website: www.taurangaboatsales.co.nz

Emails: sales@taurangaboatsales.co.nz

admin@taurangaboatsales.co.nz

